

Certificate of Analysis

For R&D Use Only - Not a California Compliance Certificate.

High Octane

Client: Perfect Plant



Total CBD	ND
Total THC	26.78 %
Total Cannabinoids	30.53 %

Sample Name:

High Octane

Matrix:

Plant

Unit Mass:

1 g per unit

Sample ID:

47440119-8

Date Received:

1/19/2024



Approved By:

Marie True, M.S.

Laboratory Manager

This certificate of analysis is responsible for the tested sample only and is for research and development (R&D) use only. This certificate of analysis shall not be reproduced, except in its entirety, without the written approval of FESA Labs. FESA Labs shall not be liable for any damage that may result from the data contained herein in any way. FESA Labs makes no claim to the efficacy, safety or other risks associated with any detected or non-detected amounts of any substances reported herein. If there are any questions with this report please email info@fesalabs.com. This certificate of analysis is intended only for the use of the party to whom it is addressed and may contain information that is confidential or protected from disclosure under applicable law. If you have received this document in error, please immediately contact us.

References: limit of detection (LOD), limit of quantitation (LOQ), not detected (ND), not tested (NT)

FESA Labs

2002 South Grand Avenue Suite A
Santa Ana, CA 92705
(714) 540-0172
www.fesalabs.com

Certificate of Analysis

For R&D Use Only - Not a California Compliance Certificate.

Cannabinoid Analysis

Complete

Analyte	LOD (%)	LOQ (%)	Mass (%)	Mass (mg/g)
CBDV	0.0035	0.011	ND	ND
CBD	0.0030	0.0090	ND	ND
CBG	0.0038	0.011	ND	ND
CBDa	0.0017	0.0052	ND	ND
CBN	0.00080	0.0024	ND	ND
Delta 9-THC	0.0022	0.0067	ND	ND
Delta 8-THC	0.0020	0.0059	ND	ND
CBC	0.00070	0.0021	ND	ND
THCA	0.0024	0.0073	30.53	305.33
Total CBD			ND	ND
Total THC			26.78	267.78
Total Cannabinoids			30.53	305.33

Date Tested: 1/22/2024

Total THC = THCa * 0.877 + d9-THC + d8-THC

Total CBD = CBDa * 0.877 + CBD

Method References:

Testing Location

Cannabinoid Profile (UNODC)

FESA Labs - Santa Ana, CA

Official Methods of Analysis, Method 2018.11.AOAC INTERNATIONAL (modified), Lukas Vaclavik, Frantisek Benes, Alex Krmela, Veronika Svobodova, Jana Hajsova, and Katerina Mastovska, "Quantification of Cannabinoids in Cannabis Dried Plant Materials, Concentrates, and Oils Liquid Chromatography-Diode Array Detection Technique with Optional Mass Spectrometric Detection," First Action Method, Journal of AOAC International, Future Issue

United Nations Office on Drugs and Crime - Recommended methods for identification and analysis of cannabis and cannabis products

Testing Location:

FESA Labs

2002 S. Grand Ave., Suite A

Santa Ana, CA 92705

(714) 540-0172

www.fesalabs.com



KMS Ag Consulting

Sample 596-022224-046

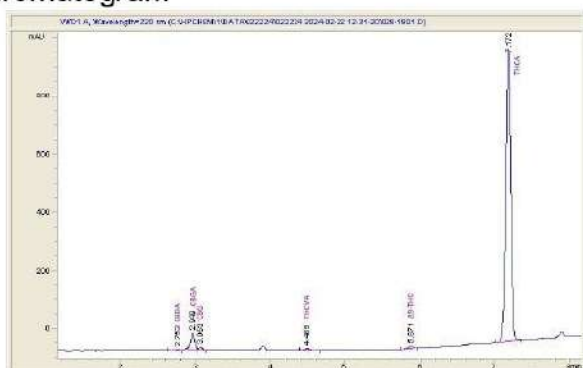
Rulayy Mintz

Sample Submitted: 02-22-2024; Report Date: 02-23-2024

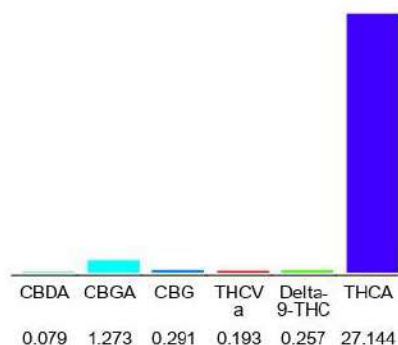
Rulayy Mintz

Plant Material: Hemp Flower

Chromatogram



Cannabinoid Profile



Cannabinoid Profile by HPLC

0.26%

Delta-9-THC

0.00%

CBD

29.24%

Total Cannabinoids

Cannabinoid	% wt	mg/g
CBDA	0.079	0.79
CBGA	1.273	12.73
CBG	0.291	2.91
THCVa	0.193	1.93
Delta-9-THC	0.257	2.57
THCA	27.14	271.44
Total Cannabinoids	29.24	292.4
Calculated Total THC	24.06	240.62
Calculated CBD Yield	0.07	0.69

Calculated Total THC = Delta-9-THC + 0.877 * THCA

Calculated Maximum CBD Yield = CBD + 0.877 * CBDA

Marin Analytics, LLC

250 Bel Marin Keys Blvd, Suite D4
Novato, CA 94949

833-321-TEST / info@marinanalytics.com

Mike Clemmons
Lab Manager

This sample has been tested by Marin Analytics, LLC using valid testing methodologies and a quality system. Values reported relate only to the sample tested. Marin Analytics, LLC makes no claims as to the efficacy, safety, or other risks associated with any detected or non-detected levels of any compounds reported herein. This Certificate shall not be reproduced except in full without the written approval of Marin Analytics, LLC. Copyright 2023 Marin Analytics, LLC All Rights Reserved.



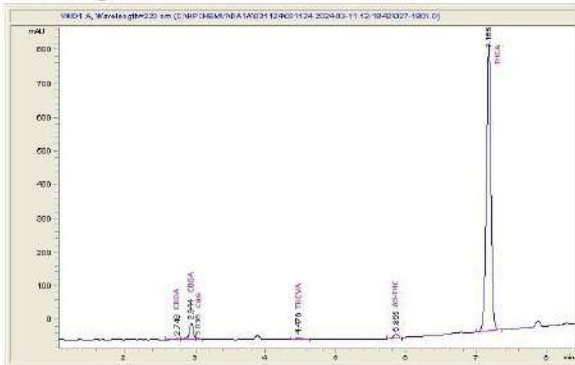
Sample 596-031124-087

Gushmintz

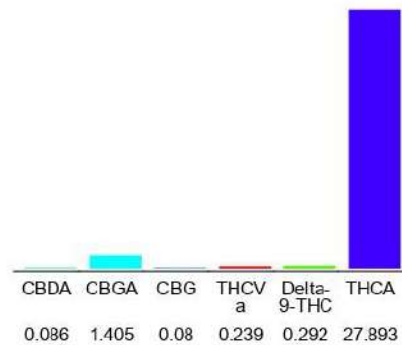
Sample Submitted: 03-11-2024; Report Date: 03-12-2024

Gushmintz

Chromatogram



Cannabinoid Profile



Cannabinoid Profile by HPLC

0.29%

Delta-9-THC

0.00%

CBD

30.00%

Total Cannabinoids

Cannabinoid	% wt	mg/g
CBDA	0.086	0.86
CBGA	1.405	14.05
CBG	0.08	0.8
THCVa	0.239	2.39
Delta-9-THC	0.292	2.92
THCA	27.89	278.93
Total Cannabinoids	30.00	300.0
Calculated Total THC	24.75	247.54
Calculated CBD Yield	0.08	0.75

Calculated Total THC = Delta-9-THC + 0.877 * THCA

Calculated Maximum CBD Yield = CBD + 0.877 * CBDA

Marin Analytics, LLC
250 Bel Marin Keys Blvd, Suite D4
Novato, CA 94949

833-321-TEST / info@marinanalytics.com

Mike Clemmons
Lab Manager

This sample has been tested by Marin Analytics, LLC using valid testing methodologies and a quality system. Values reported relate only to the sample tested. Marin Analytics, LLC makes no claims as to the efficacy, safety, or other risks associated with any detected or non-detected levels of any compounds reported herein. This Certificate shall not be reproduced except in full without the written approval of Marin Analytics, LLC. Copyright 2023 Marin Analytics, LLC All Rights Reserved.



KMS Ag Consulting

Sample 596-020824-035

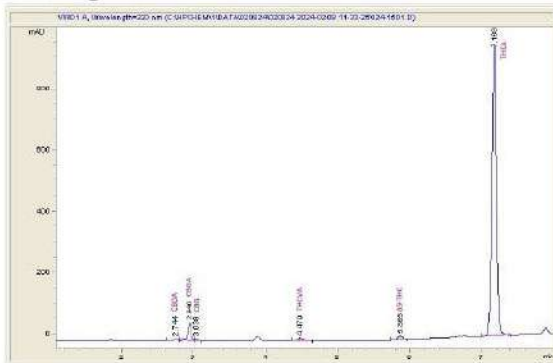
Cap Junkie

Sample Submitted: 02-08-2024; Report Date: 02-13-2024

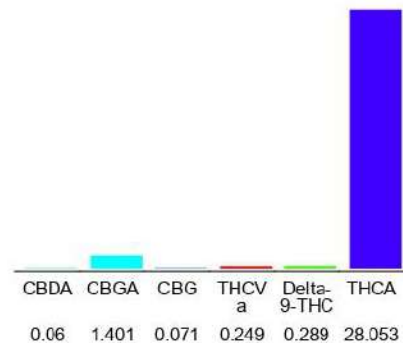
Cap Junkie

Plant Material: Hemp Flower

Chromatogram



Cannabinoid Profile



Cannabinoid Profile by HPLC

0.29%

Delta-9-THC

0.00%

CBD

30.12%

Total Cannabinoids

Cannabinoid	% wt	mg/g
CBDA	0.06	0.6
CBGA	1.401	14.01
CBG	0.071	0.71
THCVa	0.249	2.49
Delta-9-THC	0.289	2.89
THCA	28.05	280.53
Total Cannabinoids	30.12	301.2
Calculated Total THC	24.89	248.91
Calculated CBD Yield	0.05	0.53

Calculated Total THC = Delta-9-THC + 0.877 * THCA

Calculated Maximum CBD Yield = CBD + 0.877 * CBDA

Marin Analytics, LLC
250 Bel Marin Keys Blvd, Suite D4
Novato, CA 94949

833-321-TEST / info@marinanalytics.com

Mike Clemmons
Lab Manager

This sample has been tested by Marin Analytics, LLC using valid testing methodologies and a quality system. Values reported relate only to the sample tested. Marin Analytics, LLC makes no claims as to the efficacy, safety, or other risks associated with any detected or non-detected levels of any compounds reported herein. This Certificate shall not be reproduced except in full without the written approval of Marin Analytics, LLC. Copyright 2023 Marin Analytics, LLC All Rights Reserved.

Sample: 082723-37627W3714

Sample Received: 06/13/2023;

Report Created: 06/20/2023; Expires: 06/13/2024

Black Trufflez
Plant, Flower - Uncured

28.353 %

Total THC

<LOQ %

Δ-9 THC

31.098 %

Total Cannabinoids

<LOQ %

Total CBD

Cannabinoids

(Testing Method: HPLC, CON-P-3000)

Date Tested: 06/13/2023

Complete

Analyte	LOD	LOQ	Mass	Mass	
	%	%	%	mg/g	
Δ-8-Tetrahydrocannabinol (Δ-8-THC)	0.0515	0.0773	ND	ND	
Δ-9-Tetrahydrocannabinol (Δ-9-THC)	0.0216	0.0773	<LOQ	<LOQ	
Δ-9-Tetrahydrocannabinolic Acid (THCA-A)	0.0515	0.0773	28.646	286.464	
Δ-9-Tetrahydrocannabiphrol (Δ-9-THCP)	0.0515	0.0773	ND	ND	
Δ-9-Tetrahydrocannabivarin (Δ-9-THCV)	0.0515	0.0773	ND	ND	
Δ-9-Tetrahydrocannabivarinic Acid (Δ-9-THCVA)	0.0515	0.0773	ND	ND	
R-Δ-10-Tetrahydrocannabinol (R-Δ-10-THC)	0.0515	0.0773	ND	ND	
S-Δ-10-Tetrahydrocannabinol (S-Δ-10-THC)	0.0515	0.0773	ND	ND	
9R-Hexahydrocannabinol (9R-HHC)	0.0515	0.0773	ND	ND	
9S-Hexahydrocannabinol (9S-HHC)	0.0515	0.0773	ND	ND	
Tetrahydrocannabinol Acetate (THCO)	0.0515	0.0773	ND	ND	
Cannabidivarin (CBDV)	0.0515	0.0773	ND	ND	
Cannabidivarinic Acid (CBDVA)	0.0515	0.0773	ND	ND	
Cannabidiol (CBD)	0.0515	0.0773	ND	ND	
Cannabidiolic Acid (CBDA)	0.0216	0.0773	<LOQ	<LOQ	
Cannabigerol (CBG)	0.0216	0.0773	<LOQ	<LOQ	
Cannabigerolic Acid (CBGA)	0.0515	0.0773	2.219	22.186	
Cannabinol (CBN)	0.0515	0.0773	ND	ND	
Cannabinolic Acid (CBNA)	0.0515	0.0773	ND	ND	
Cannabichromene (CBC)	0.0515	0.0773	ND	ND	
Cannabichromenic Acid (CBCA)	0.0515	0.0773	0.233	2.330	
Total			31.098	310.980	

Total THC = THCa * 0.877 + Δ9-THC; Total CBD = CBDA * 0.877 + CBD; LOQ = Limit of Quantitation; ND = Not Detected.

Total THC Measurement of Uncertainty: ± 0.050%
Total CBD Measurement of Uncertainty: ± 2.000%
THCO potency analysis does not designate quantitative specificity of Δ-8-THCO and Δ-9-THCO isomers

Amended report issued to reflect change in sample identification.



New Bloom Labs
6121 Heritage Park Drive, A500
Chattanooga, TN 37416
(844) 837-8223
TN DEA#: RN0563975
ANAB Testing Laboratory (AT-2868): ISO/IEC
17025:2017

Natalie Siracusa
Natalie Siracusa
Laboratory Director

Powered by
reLIMS
info@relims.com



KMS Ag Consulting

Sample 596-020824-033

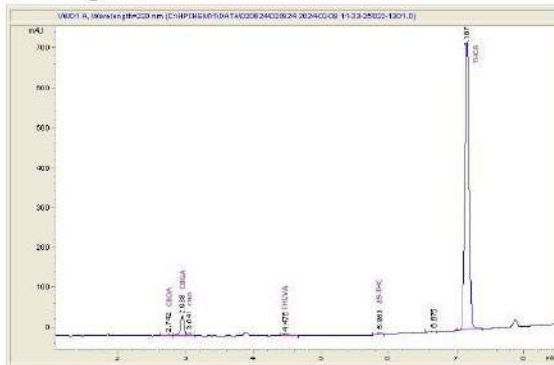
Tropicana Cookies

Sample Submitted: 02-08-2024; Report Date: 02-13-2024

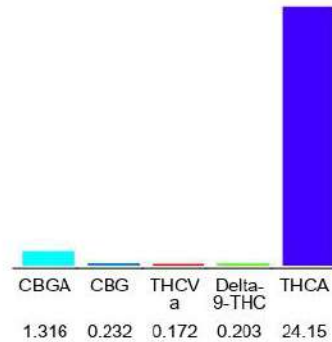
Tropicana Cookies

Plant Material: Hemp Flower

Chromatogram



Cannabinoid Profile



Cannabinoid Profile by HPLC

0.20%

Delta-9-THC

0.00%

CBD

26.07%

Total Cannabinoids

Cannabinoid	% wt	mg/g
CBGA	1.316	13.16
CBG	0.232	2.32
THCVa	0.172	1.72
Delta-9-THC	0.203	2.03
THCA	24.15	241.5
Total Cannabinoids	26.07	260.7
Calculated Total THC	21.38	213.83
Calculated CBD Yield	0.00	0.00

Calculated Total THC = Delta-9-THC + 0.877 * THCA

Calculated Maximum CBD Yield = CBD + 0.877 * CBDA

Marin Analytics, LLC
250 Bel Marin Keys Blvd, Suite D4
Novato, CA 94949

833-321-TEST / info@marinanalytics.com

Mike Clemmons
Lab Manager

This sample has been tested by Marin Analytics, LLC using valid testing methodologies and a quality system. Values reported relate only to the sample tested. Marin Analytics, LLC makes no claims as to the efficacy, safety, or other risks associated with any detected or non-detected levels of any compounds reported herein. This Certificate shall not be reproduced except in full without the written approval of Marin Analytics, LLC. Copyright 2023 Marin Analytics, LLC All Rights Reserved.